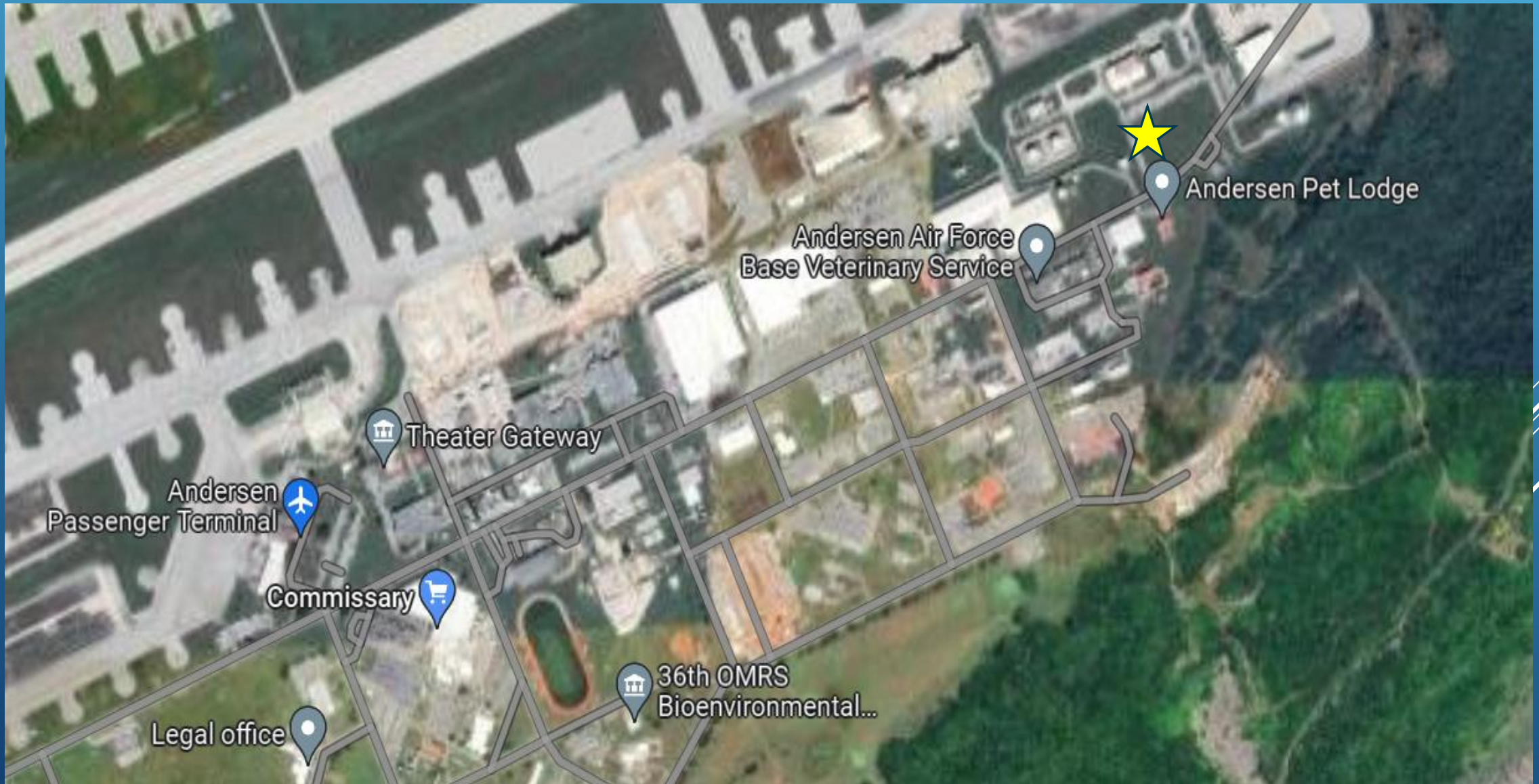


NEW TERMINAL IS LOCATED AT THE END OF ARC LIGHT BLVD ON THE LEFT





DEPARTURES FROM: ANDERSEN AFB (UAM) SATURDAY, 20 DECEMBER 2025



<u>ROLL CALL</u>	<u>DESTINATION(S)</u>	<u>SEATS</u>	<u>REMARKS</u>
1305	KADENA AB, JAPAN	50F	PATRIOT EXPRESS PASSPORT REQUIRED

Seat Release: T= Tentative, F= Firm, TBD= To Be Determined

TRAVEL RESTRICTIONS APPLY CONTACT AMC PASSENGER TERMINAL FOR INFORMATION

All flights are subject to change without notice

Please arrive NLT= NO LATER THAN ONE HOUR PRIOR to roll call to mark yourself present



DEPARTURES FROM: ANDERSEN AFB (UAM)

SUNDAY, 21 DECEMBER 2025



<u>ROLL CALL</u>	<u>DESTINATION(S)</u>	<u>SEATS</u>	<u>REMARKS</u>
0640	YOKOTA AB, JAPAN	10T	PASSPORT REQUIRED
1525	SEATTLE TACOMA INTL., WASHINGTON	TBD	PATRIOT EXPRESS

Seat Release: T= Tentative, F= Firm, TBD= To Be Determined

TRAVEL RESTRICTIONS APPLY CONTACT AMC PASSENGER TERMINAL FOR INFORMATION

All flights are subject to change without notice

Please arrive NLT= NO LATER THAN ONE HOUR PRIOR to roll call to mark yourself present



DEPARTURES FROM: ANDERSEN AFB (UAM)

MONDAY, 22 DECEMBER 2025



<u>ROLL CALL</u>	<u>DESTINATION(S)</u>	<u>SEATS</u>	<u>REMARKS</u>
-	NO SCHEDULED DEPARTURES	-	-

Seat Release: T= Tentative, F= Firm, TBD= To Be Determined

TRAVEL RESTRICTIONS APPLY CONTACT AMC PASSENGER TERMINAL FOR INFORMATION

All flights are subject to change without notice

Please arrive NLT= NO LATER THAN ONE HOUR PRIOR to roll call to mark yourself present

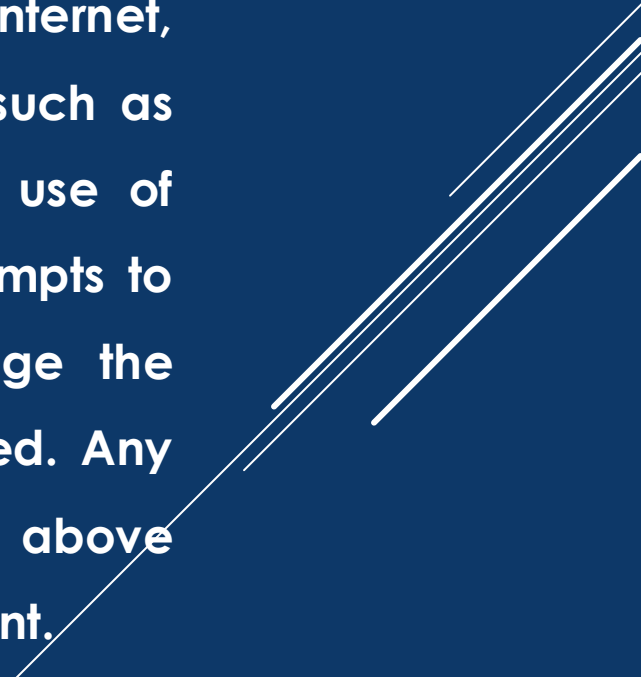


NOTICE



Information Disseminated to the Public and Authorized Individuals

Information and files provided to authorized individuals by internet, mail, email, and fax containing mission-related information, such as operational or flight schedules, are intended solely for the use of determining space-r and space-a flight availability. Any attempts to retransmit, upload, pass to unauthorized persons, or change the information received for any other purpose is strictly prohibited. Any action circumventing the parameters specified and/or implied above is subject to investigation and/or prosecution by law enforcement.

Three white diagonal lines of varying lengths and thicknesses are positioned on the right side of the slide, extending from the middle towards the bottom right corner.